

A peer-to-peer support process

to facilitate improved Water Framework Directive and Floods
Directive implementation

Call for expression of interest

SCG meeting, Feb 8, 2018

Contents

- Introduction to Peer to Peer Process
- Call for Interest
- Contacts

Purpose of the peer-to-peer support

The **objective** is to set up a simple, voluntary and targeted system to allow mutual learning between peers about WFD and FD implementation.

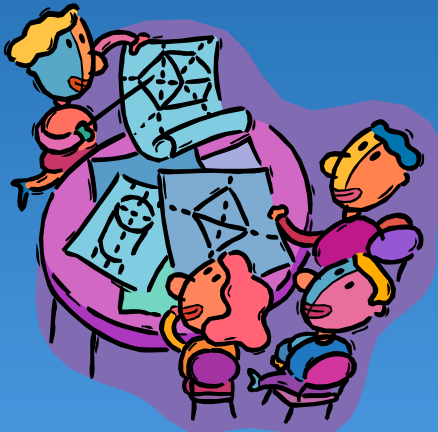
Who ?

Practitioners from River Basin Districts involved in the implementation of the WFD and FD.

The peer-to-peer support

How ?

Expression of interest to the secretariat to receive a peer review mission on the one side and volunteer reviewing experts on the other side



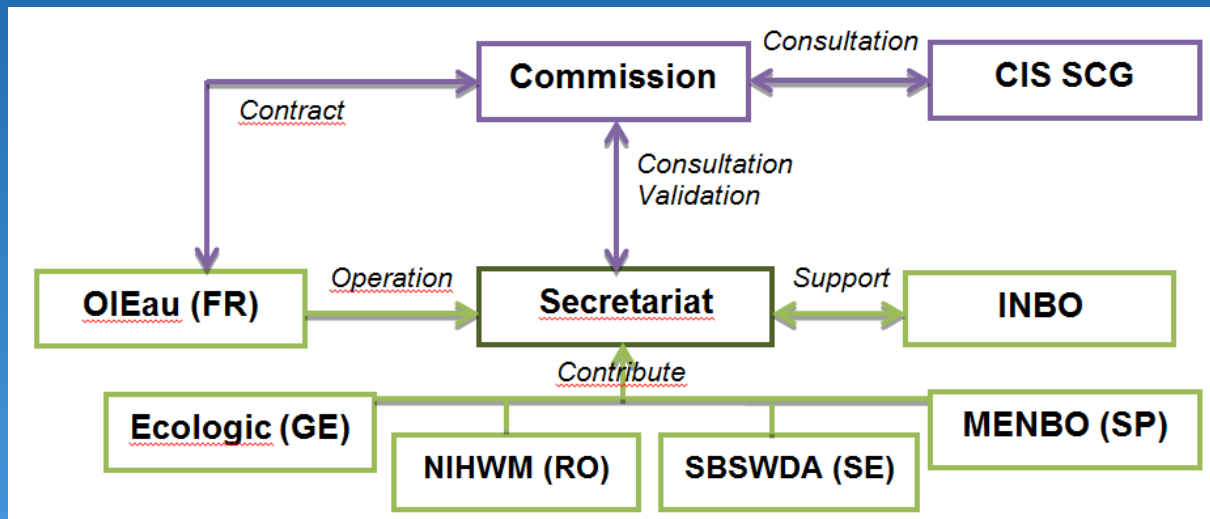
Preliminary exchanges for the preparation of precise Terms of References including match – making procedures to propose Reviewing Experts to Receiving Competent Authorities (RCAs) and online preparatory meeting gathering the mission participants

Organising the Peer Review mission in the receiving Competent Authority in line with the Terms of References

Reports on lessons learnt and tips

Webinars / online Workshops

Partners and process



SIGNATURE OF THE CONTRACT



Secretariat

Call for expression of interests
Dissemination through WD, SCG, CIS WG
& proactive search by the secretariat



T+2 Months

RBME/FRME

CA

Send CV
and profile form

Send EoN
and draft ToR



T+3 Months

Match-making for each mission
and first exchanges with the RB&FRME and CA :

- Organisation of a on-line preparatory meeting
 - Review of the ToR and QC
- Choice of a date for the peer-to-peer support mission

Finalisation of the ToR
Detailed plan of the missions



T+4 Months

The activities timetable



	Year 1												Year 2											
	1	2	3	4	5	6	7	8	9	10	11	12	13	14	15	16	17	18	19	20	21	22	23	24
KO meeting	█																							
Incept. report	█																							
MoP	█	█																						
Calls for EoI			█	█	█	█	█	█	█	█	█	█	█	█	█	█	█	█	█	█	█	█	█	█
Inter. report												█												
Missions					█	█	█	█	█	█	█	█	█	█	█	█	█	█	█	█	█	█	█	█
Comp. Mech.					█	█	█	█	█	█	█	█	█	█	█	█	█	█	█	█	█	█	█	█
LL report																							█	
Final report																								█

The Manual of Procedures

The Manual of Procedures includes the following information:

- * Scope and purpose of the peer-to-peer support process
- * Summary of the different steps for the peer-to-peer support process
- * Organisation and roles of the CA, Experts and the Secretariat
- * Specific guidance document for the CA:
 - * Objectives, steps and procedures for the peer-to-peer support process from the CA perspective (including the time frame, the workload, etc.);
 - * Support provided by the Secretariat for each of these steps;

The SCG is invited to:

Facilitate the dissemination to the River Basin districts and Experts of their respective MS.

The call targets on the **one side the identification of organisations** involved in RBM and FRM Planning proposing Terms of Reference for a visit/mission, and on the other side **voluntary experts** to contribute to the peer reviews.

Send remarks on the updated manual of procedure

Contacts

[/www.aquacoope.org/peertopeer](http://www.aquacoope.org/peertopeer)

Experts who are interested in participating to the peer review can already send their CV (Europass format) to:

peertopeer@oieau.fr

and fill-in the completed “Expert Profile Form”

Competent Authorities (CAs) who want to work with reviewers can send the completed "review request form" to

peertopeer@oieau.fr